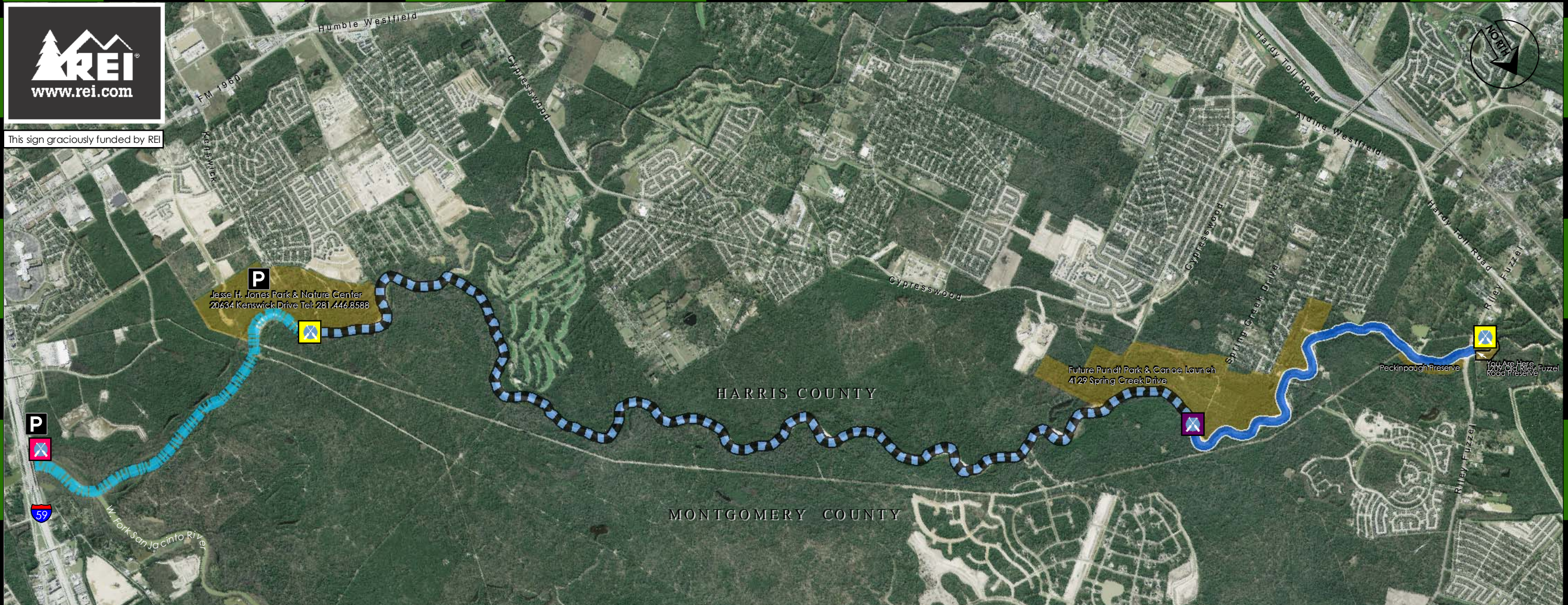




This sign graciously funded by REI



Old Riley Fuzzel Road Canoe Launch - Spring Creek Greenway



- | | | | |
|--|---|--|---|
| | Existing Canoe Launch | | Old Riley Fuzzel Road Preserve to Pundt Park
Approximately 2.8 Miles |
| | Future Canoe Launch & Take Out Point | | Pundt Park to Jesse H. Jones Park & Nature Center
Approximately 8.3 Miles |
| | Alternate Canoe Launch & Take Out Point | | Jesse H. Jones Park & Nature Center to Alternate I-59 Launch
Approximately 2.6 Miles |
| | Parking | | |
| | Public Park or Preserve | | |
- Total Distance From Old Riley Fuzzel Road Preserve to Alternate I-59 Launch is 13.7 Miles.
The Entire Canoe Trail Can Take Over 8 Hours!

GUIDELINES

TRIP PLAN: It is required to file a canoe trip plan with Jesse H. Jones Park & Nature Center. Call 281.446.8588 for information about filing this plan. The Harris County Precinct 4 Parks have closing times (5 p.m. in the winter and 7 p.m. in the summer) and people will get locked out/in if they do not notify park staff that they intend to pull out at park locations.

LIFE VESTS: All passengers should wear life vests & abide by all safety & navigational rules for boating.

TRESPASSING: Spring Creek shores are private property except where noted as public property. Any future additional launches will be clearly posted as public property and part of The Spring Creek Greenway.

EMERGENCY: Contact 911 in case of an emergency. Always carry a cell phone with you and ample provisions. Let someone know where you are and when you will return. Many areas along the creek are remote.

PARTNERS



Legacy Land Trust
www.llt.org



Montgomery County Pct. 3
Commissioner Ed Chance
www.springcreekgreenway.org



Harris County Pct. 4
Commissioner Jerry Eversole
www.hcp4.net

